



**Karolinska
Institutet**

Avoid and minimise suffering in animal models and procedures

—

How can the AWB help?

Animal Welfare Body (AWB) at Karolinska Institutet

The AWB at Karolinska Institutet

The Animal Welfare Body (AWB) is an independent authority at the university

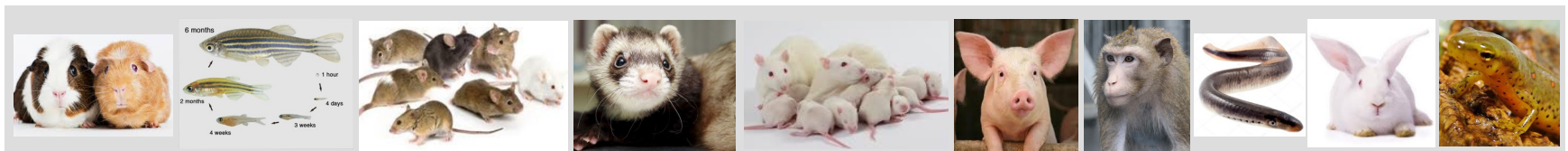
- established in 2013, with 14 members chaired by the 3R-officer
- reformed 2018 and consists currently of 8 permanent members from four occupational categories chaired by a AWB chairperson
 - the named animal care and welfare officer (NACWO)
 - veterinarians
 - animal technician and ethologist
 - researchers

Experts for special laboratory animals can be consulted if required.



Aims and Purposes of the AWB at KI

- are well-defined in the Swedish legislation (SJVFS 2019:9 s. L150)
 - Actively work for prioritising good animal welfare in the organisation..
 - Produce and review internal routines for monitoring, reporting, and following up on animal welfare.
 - Give advice on how the 3R-principles can be applied.
 - Continuously monitor the development withing the 3Rs and inform about technical and scientific development in the 3Rs to KI personnel working with animals.



Examples of the AWB work (1)

- RECOMMENDATIONS

- Implementing 3Rs in research by using PREPARE + ARRIVE
- Recommendations for model specific assessments eg rheumatoid arthritis, diabetes type 1 (STZ)
- Standardised minimum acclimation times after transport

- ADDENDUMS

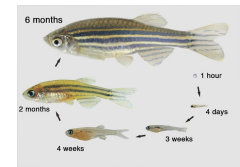
AWB can approve addendums to valid ethics licenses which do not risk to impact negatively on animal welfare.

- Ruffly 25 decisions per year, 50% administrative decisions.
- Other decisions include refinements in drug administration, improvements in training and testing sessions, analgesia for fen clipping, improvements in post-operative care

Examples of the AWB work (2)

Refine-projects within Comparative Medicine 3R- groups:

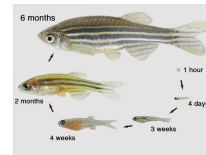
- Enrichments for zebrafish and mice



- Training of NHPs for voluntary weighing



- Refinements for aquatic animals eg analgesia, assessment templates



- Habituation for all procedures, eg prior administrations of substances

Examples of the AWB work (3)

- MONITORING RETROACTIVE EVALUATIONS from CDFN
 - Raise awareness for new developments improving animal welfare, and new alternative methods
 - AWB has made a template also for moderate severity.
- NETWORKING and EDUCATION
 - Organizing regular meetings with local and regional AWB at Universities in Stockholm and Uppsala
 - Participating in meetings of the National 3R centre, annual conferences
 - International networks eg Infrafrontier Animal Welfare Expert Group, RSPCA
 - Organising 3R-meetings and workshops on welfare issues and lectures

Research areas at KI

Currently 256 approved ethics licenses at KI of which 103 are classified as severe.

Of Note! In Sweden, ethics licenses usually include many procedure, the majority are not severe

Covering many different animal species (and models):



Guest visit due to COVID-19: ferret

Current trends at KI: fewer rat models, slight increase towards aquatic animals.

AWB and Research areas at KI

Examples of research areas at KI of which some are severe models e.g.:

- Rheumatoid arthritis
- Heart injury models
- Parkinson's disease
- Spinal cord injury
- Multiple sclerosis
- Peripheral nerve injury
- Tumour
- Infection
- Wound healing
- Metabolism
- Aging

How can AWB help in refinement for severe models and procedures?

How can the AWB help to avoid and minimize suffering in animals?

- Providing Guidance and Recommendations
- Approving speedy and free of charge changes in ethics licenses which do improve animal welfare
- Continuous reviewing of retroactive evaluations
- Collaborating with researchers, 3R-groups, animal technicians, veterinarians, other AWBs
- Promoting a CULTURE of CARE at all KI animal facilities



**Karolinska
Institutet**

Thank you for your attention

Please contact us on: AWB@ki.se

